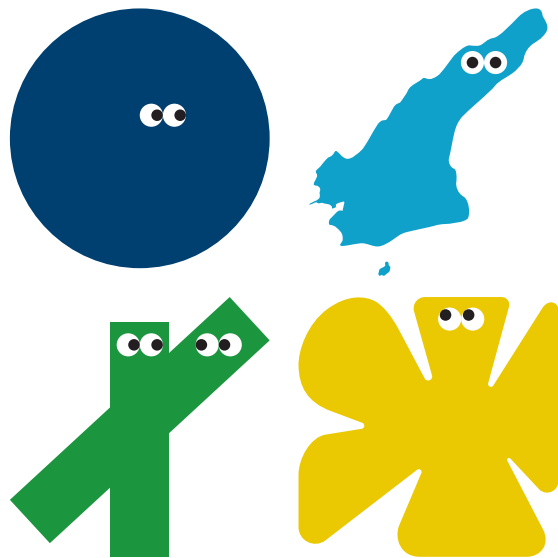


# Hyogo Prefectural Awaji Yumebutai Greenhouse

# AWAJI GREEN- HOUSE



### By car

#### From Kobe

Take the Kobe Awaji Naruto Expressway to exit 'Awaji IC', and continue on Route 28 southbound (approx. 5 mins)

#### From Tokushima

Take the Kobe Awaji Naruto Expressway to exit 'Higashiura IC', and continue on Route 28 northbound (approx. 10 mins)

If using car-nav enter destination as 'Grand Nikko Awaji' (グランドニッコー淡路)

### Public Transportation

#### Expressway Bus

1. From JR Sannomiya or JR Shin-Kobe Sta. to 'Awaji Yumebutai-mae' (approx. 50mins)
2. From JR Maiko Sta. or Sanyo Dentetsu Maikoko Sta. to 'Awaji Yumebutai-mae' (approx. 20mins)

#### Jenova Line (High speed ferry)

Take ferry from Akashi Port to Iwaya Port, and from there take a taxi or Awaji City Seikatsu Kankou Bus

Please use underground parking at the Grand Nikko Awaji (¥600/per entry/per day)

Entry	Permanent Exhibit	Special Exhibit
Adult	¥750/(¥600)	Entry fee varies when there is a temporary exhibit on show. Enquire for more details.
Silver (70+)	¥370/(¥290)	
Disability card holders	¥180/(¥140) One carer free	
Up to high school graduation	Free	

- Prices in brackets are for groups of 20 +
- Silver pricing is for those aged 70+. Please bring ID etc. with proof of date of birth.
- Disability card holders or users of the app 'Mirairo ID (ミライロID)' can use these as identification.
- For those using discounted rates please go to the information counter.
- Akashi Kaiyō National Government Park set ticket available (excluding temporary exhibit periods)

**Opening hours: 10:00-18:00 (Last admission 17:30)**

\*Business hours may vary during temporary exhibits. Check website for more information.

**Closed: 2 days per year (enquire for more information)**

## AWAJI GREENHOUSE

Yumebutai 4, Awaji City 656-2306 TEL: 0799-74-1200 FAX: 0799-74-1201

<https://awaji-botanicalgarden.com/>

[f @awajibotanicalg](#) [@Awaji\\_botanicalg](#) [@awajibotanicalg](#)

## Inspiration for the future

Located among the rich nature of Awaji Island, the Awaji Yumebutai is one of Tadao Ando's most renowned pieces, and the Awaji Green House is in this impressive structure. This is a truly living greenhouse where a wide variety of plants offer new discoveries on every visit. Visitors can enjoy the wonderful views and ecology from a variety of angles, such as a view of the plants from above in the large three-dimensional space (20m high) like on a sightseeing tour, or up close.

The land that Awaji Yumebutai was built on was originally a sand quarry used for the construction of Kansai International Airport etc. And the greenery that was once lost here has been regenerated through world-class environmental initiatives. However, the regeneration of greenery is not limited to the greenhouse, but pervades Awaji Yumebutai as a "stage of coexistence between people and nature".

Awaji Yumebutai's Awaji Greenhouse (one of Japan's largest greenhouses) is a place of inspiration for dreams of the future and for future generations.



# Hello, hello, plants of the world

Welcome to one of Japan's largest greenhouses!



## Exhibition room 1

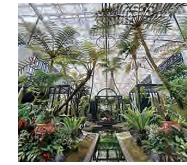
### Midori no Choukoku (Green Sculpture)



Cacti, euphorbias, and other succulent plants that grow in arid regions are cultivated and exhibited here. Visitors can enjoy the splendid forms of plants that can be likened to 'green sculptures'.

## Exhibition room 2

### Shikisai no Niwa (Garden of Colour)



Exhibits in this room are centered on plants that grow in tropical and subtropical regions and emit rich colours. Visitors are fascinated by the rich colours and green magic of each individual plant.

## Exhibition room 3

### Kurashi no Midori (Greenery in Daily Life)



Plants are very important for maintaining the balance of our natural environment. At the same time they bring moisture, peace and comfort to our daily lives. This room introduces various plants intertwined with our daily lives.

## Exhibition room 4

### Shinka no Niwa (Garden of Evolution)



The Jurassic tree (*Wollemia nobilis*), which was discovered in Australia in the 1990s (thought to remain only as fossils until then) is cultivated and displayed here. It is an exhibition that makes visitors think about the magnificent evolution of the plants here.

## Exhibition room 5

### Nigiwai no Niwa (Lively Garden)



A 'garden castle' of growing plants was erected as a symbol of this room, and various creative ideas are implemented to make children feel closer to plant life. It's almost like a festival garden celebrating flowers and greenery that parents and children can enjoy alike.

## Hikage no Niwa (Garden of Shade)

Some plants grow well in the shade or indoors. Plants that grow in low light suitable for indoor greening are on display here.

## Terrace

Exhibits of *Pandanus utilis* (originating from Madagascar), which is a member of the *Pandanus tectorius* that grows naturally along the coastline of Okinawa, and tropical fruit trees on display. This is a terrace where you can relax.

## Atrium

Trees that grow in Okinawa, Yunnan Province in China, Taiwan, and Vietnam are exhibited in the landscaped atrium with flowing water.

## Special Exhibit

This room is a treasure trove of plants, with displays of rare plants from Yunnan Province, China (the world's flower capital) and plants that influenced floral culture around the world.